
4. Set up the drive

If you used EasyMove to transfer your data, your installation is complete. Turn on your computer and you're back at work.

If you didn't use EasyMove, insert a bootable floppy disk (See Section 7, below) and turn the power on. The computer will automatically determine the drive type for your new disk. From the A: prompt, type **FDISK** followed by the Return key. Choose option 1 (Create DOS partition or logical drive), then choose option 1, (Create the primary DOS partition), accept the maximum size and activate it. Due to the limitations of Windows 3.1 and early versions of Win '95, the maximum partition size is 2,048 MB. If your new disk is larger than this, you'll then need to create extended partitions (D and/or E drives) to use the remaining capacity of the disk. Choose option 1 (Create DOS partition or logical drive). Choose option 2 (Create extended DOS partition), then accept the defaults for partition size and logical drive size. Repeat this step to utilize the full capacity of your new disk.

When the primary DOS partition is created (and any extended partitions, if required), reboot your system. From the A: prompt, type **FORMAT C: /S** followed by the Enter key. This will format the primary DOS partition and copy the system files to it making it a bootable drive. If you have an extended partition, type **FORMAT D:** (or **FORMAT E:**) followed by the Return key to format the D/E drive. Remove the floppy disk, and when you restart your system, it will boot from your new C drive.

Note: If your original hard drive only had a single partition (you only had a C: drive) and your new drive has multiple partitions, your CD-ROM may have been moved to the next available drive letter *after* your new hard drive partitions. If you have CD-ROM based applications installed (those that require the CD-ROM to run), these applications may be expecting to find your CD-ROM drive at D:, which may have changed. If you have problems running these applications, verify the drive letter of your CD-ROM, and reinstall the CD-ROM applications if the CD-ROM drive is at a new drive letter.

Remember, perform this step of making partitions and formatting them **only** if you didn't use EasyMove in Step 1, above.

5. Review

- Use EasyMove (if available) to transfer your data *or*
- If you don't use EasyMove, back up your data.
- Open the door or remove the drive cover.
- Slide the drive from the housing.
- Install the new disk drive.
- Replace the cover or door.
- If you didn't use EasyMove, partition and format the disk, then restore your operating system and data from your backup.

6. Problems?

Having problems? Review the steps for removal or installation, then call our Technical Support Department at 1(800) 555-1671. Online support is available at support@cmssproducts.com.

There is a known issue with some computers and their PCMCIA card slots. The EasyBundle interface card may not be recognized by your system when you plug the card into the slot. If this is the case, move the card to the other slot and try again.

7. Bootable Floppy Disks

To be able to boot (start) your computer without a hard disk, you'll need a floppy disk with certain files and applications on it to boot from. A bootable floppy disk does not come with your computer, and you have to make your own before you remove your hard disk. From the Settings menu, open the control panel window, then open the Add/Remove Programs icon. Select the Start-Up Disk tab, then click the Create Disk button.

Copyright © 1998 by CMS Peripherals, Inc. All rights reserved. No part of this document may be reproduced in any form without prior written consent from CMS. The information and specifications in this document are subject to change without notice.

CMS, CMS Peripherals, and the CMS logo are registered trademarks of CMS Peripherals, Inc. NEC and Versa are trademarks of NEC, Inc. All other trademarks or registered trademarks used herein are the property of their respective owners.

072650.5
June, 1999

Installation & Set-Up Guide



Hard Disk Installation & Set-Up Guide

For NEC® Versa™
2000, 4000, & 6000 Series
Personal Computers

To replace your hard disk with

your new CMS hard disk drive for your NEC Versa 2000, 4000, or 6000, follow these instructions.

1. Preserve your data

If you've used the EasyMove software to transfer your data from your original drive to your new drive, you're ready to exchange your original and new drives.

If you don't have EasyMove, you should back-up your data using whatever method is best for you (floppies, tape, network, removable drive, etc.).

2. Remove the old disk drive

Follow these steps to remove and replace your old drive. In all cases, make sure your computer is turned off.

Versa 2000

A. Open the door on the left front side of the computer as shown in Figure 1. This exposes the old disk drive.



Figure 1

B. Grasp the wire handle and pull the drive from the case as shown in Figure 2.

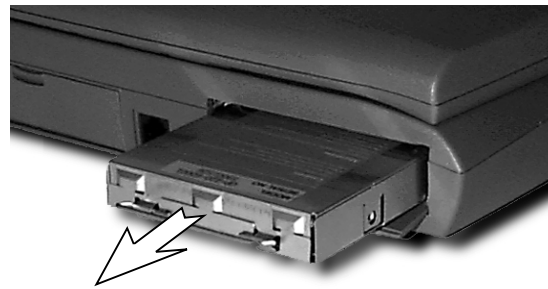


Figure 2

Versa 4000

A. Turn the computer over with the battery to your right. Remove the disk drive cover on the front left corner as shown in Figure 3.

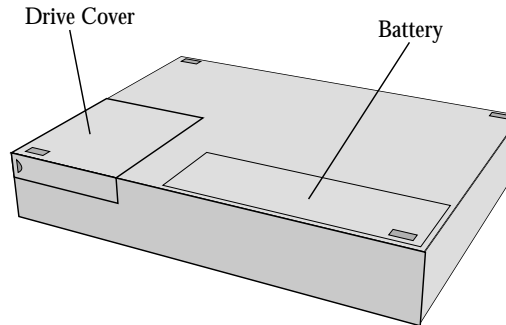


Figure 3

B. Pull the disk drive out of the housing as shown in Figure 4.

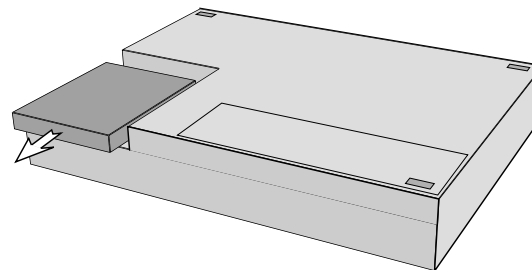


Figure 4

Versa 6000

A. Turn the computer over with the battery to your right. Using a Phillips screwdriver, remove the screw (1) holding the disk drive cover on the front left corner as shown in Figure 5. Slide the latch on the side of the cover up (2), then slide the cover off the computer (3).

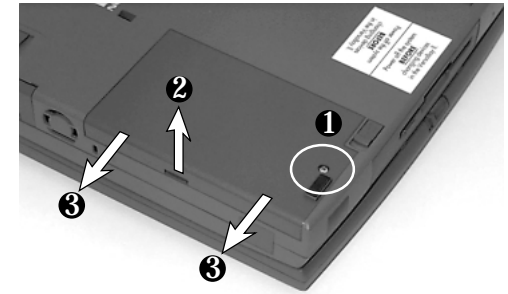


Figure 5

B. Slide the disk drive back from the connector, then lift it from the computer as shown in Figure 6.



Figure 6

3. Install the new drive

Install your new disk drive by following these steps:

A. Slide the new drive into position by reversing the procedure from Step 2B as shown in Figures 2, 4, or 6.

B. Replace the cover on the 4000 and 6000, or close the door on the 2000.